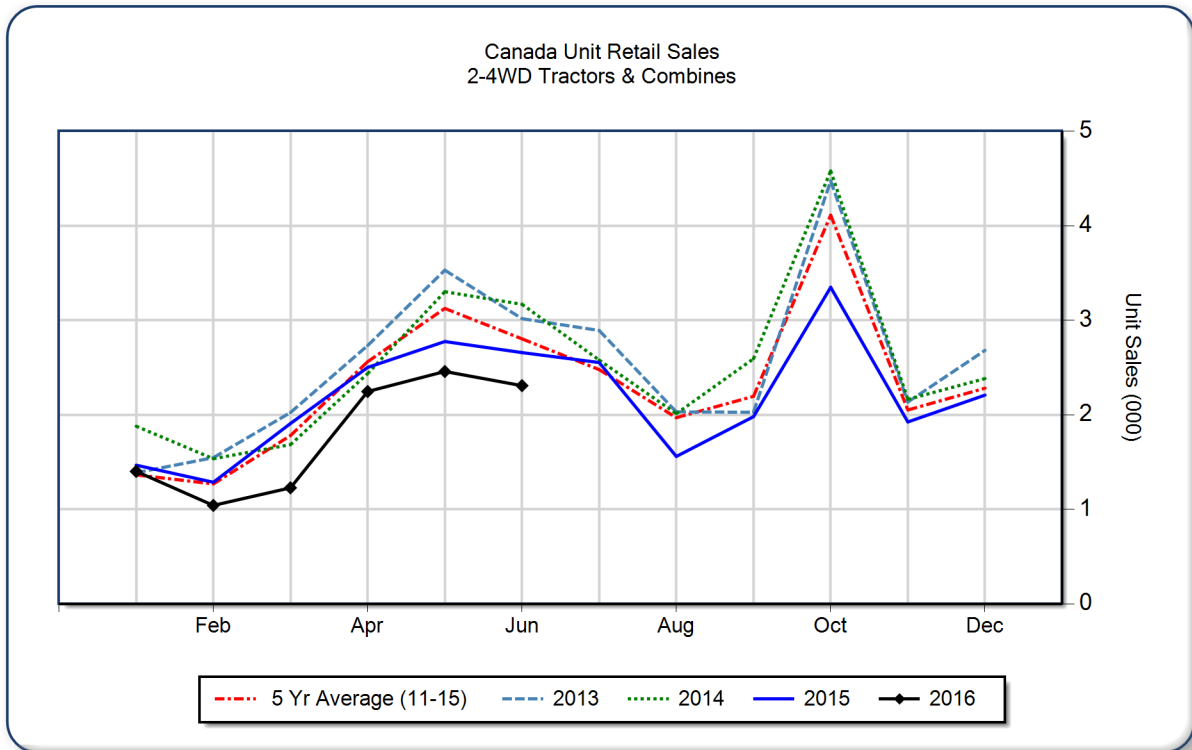




AEM Canada Ag Tractor and Combine Report June 2016

Copyright, AEM. All rights reserved. If data is referenced, please acknowledge AEM as the source.

	June			YTD - June			Beginning Inventory Jun 2016
	2016	2015	%Chg	2016	2015	%Chg	
2WD Farm Tractors							
< 40 HP	1,315	1,623	-19.0	5,515	6,608	-16.5	9,899
40 < 100 HP	385	484	-20.5	2,315	2,558	-9.5	4,522
100+ HP	359	348	3.2	1,782	2,296	-22.4	2,465
Total 2WD Farm Tractors	2,059	2,455	-16.1	9,612	11,462	-16.1	16,886
4WD Farm Tractors	58	49	18.4	441	490	-10.0	291
Total Farm Tractors	2,117	2,504	-15.5	10,053	11,952	-15.9	17,177
Self-Prop Combines	191	154	24.0	628	643	-2.3	541



The AEM Ag Tractor and Combine Report is provided monthly and is derived from AEM member companies through proprietary statistical reporting programs. The data is provided by AEM members and represents preliminary monthly retail sales of Ag equipment. Separate reports are available for the U.S., Canada and Russia. For more information, please visit: <http://www.aem.org/MarketInfo/Stats/AgTractorCombine/>. Attention media: to speak with an AEM spokesperson about the data, please contact Pat Monroe at pmonroe@aem.org.